

MIX master

These Austin homeowners incorporated a little of this, a little of that for a style-blending kitchen that defies easy categorization.

You want a label, though, don't you? How about "contemporary meets midcentury modern"? That's how homeowners Jen and Ryan Hill describe their new home. It's built in the middle of a mod 1940s neighborhood, so they designed it with the era's sharp angles and clean lines in mind. But they didn't want the home to be a period piece. Their kitchen, at the heart of the open floor plan, puts their style and material mixing strategy on display.

■ **PALETTE** They were inspired by nature and chose a warm-cool combo. The neutrals are warm: hickory floors, a big slab of brown marble, and off-white walls (Sherwin-Williams Incredible White). The colorful cabinets and tile are cool tones of sage and indigo.

■ **TEXTURE** In a kitchen full of green cabinetry, the color would normally star. But it's the visual texture of handmade mosaic tile and contrasting grout that catches the eye here. (Chaine Homme in Slate Blue; [fireclaytile.com](#))

■ **FINISHES** "I did not want to be committed to one metal for the entire house," Jen says. The appliances are stainless steel, the stools are iron, and the Scandinavian-style pendants are a soft brushed copper. (Umage Clava; [lamps.com](#))

PHOTOS LISA ROMEREIN STYLING ELIZABETH DEMOS



Jen and Ryan Hill with son Dylan, above, lived in the original 1949 home for years before scrapping plans for an addition and building new. About 80 percent of the old home was disassembled and reused or donated to Habitat for Humanity.

Get ideas for tweaking this mixing formula to suit your style on page 40.



DETAIL DRIVEN

Designer Becca Stephens helped Jen and Ryan curate a mix of accessories that support the room's big design statements.

1 BARSTOOLS

The choice of stools was twofold. For style, the hairpin legs and walnut wood reference the home's midcentury influences. For comfort, they have backs, armrests, and a swivel feature.

2 RANGE HOOD

The couple didn't want the range placement on the exterior wall to preclude natural light. The solution? A higher range hood designed to go over an island without blocking sight lines (or in this case, the cook's outdoor views).

The large picture window neatly frames it. (Napoli Island; [zephyronline.com](#))

3 FAUCET

The faucet has sleek modern styling, and its high arcing neck provides clearance for washing big pots and pans. Plus, it can rotate to reach the corners of the big sink. (Citterio in Steel Optic; [axor-design.com](#))

4 COUNTERTOPS

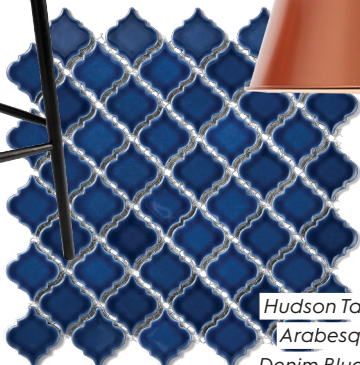
They picked dark brown marble for the island and durable white quartz on the perimeter (more mixing). Full disclosure: Jen says she wouldn't choose the marble again for such a high-use area.

TRADITIONAL

Timeless and full of pretty, ornamental details.



▲
Margot Bar and Counter Stool, \$279; grandinroad.com



▲
Hudson Tangier 2"x2" Arabesque Tile in Denim Blue, \$19/sq. ft.; wayfair.com



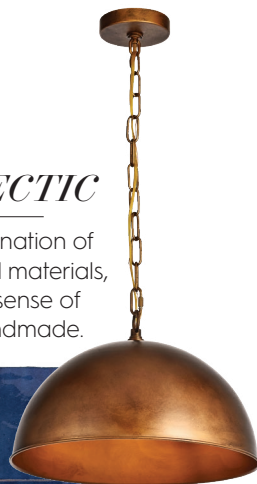
▲
Metal Shade Cord Pendant in Copper, \$129 (10"); potterybarn.com



▲
Amolea Counter Stool, \$250; worldmarket.com



▲
Cloe 5"x5" Ceramic Tile in Blue, \$8/sq. ft.; bedrosians.com



▲
Emrick Single Dome Pendant, \$165 (15" W); jossandmain.com



▲
Emtek American Classic pull, knob in French Antique, from \$11; build.com



▲
BH&G® 3" Matte Black Bar pull, \$9 for 2; walmart.com/BHG. Eli Marble Knob, \$15; cb2.com

MODERN

Streamlined shapes and lines with minimal accents or flourishes.



▲
Renzo 3"x12" Ceramic Wall Tile in Denim Blue, \$7/sq. ft.; wayfair.com



▲
Vaidya Counter Stool in Black, \$375 for 2; allmodern.com

▲
Trace 2 Pendant Light in Copper, \$220; bludot.com



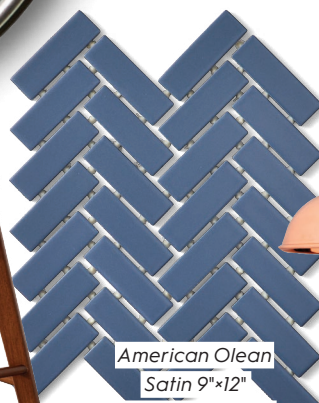
▲
Triangle Bar Pull in Brushed Nickel, from \$13; crateandbarrel.com

make it yours STYLE STUDY

We translated the palette and key elements of Jen and Ryan Hill's kitchen into four different styles so you can bring it home.

TRANSITIONAL

Sophisticated, crisp, and extremely versatile.



▲
American Olean Satin 9"x12" Herringbone Tile, \$5/sq. ft.; lowes.com



▲
Nathan James Amalia Kitchen Stool in Antique Coffee/Brown, \$90; homedepot.com



▲
Carson 12" Cord Pendant in Polished Copper, \$279; rejuvenation.com



▲
Amerock Rochdale Cabinet Cup Pull in Flat Black, \$57 for 10; amazon.com ■