



by  
KELLY RYAN KEGANS  
photos  
CARSON DOWNING  
produced by  
LAUREN BENGTON &  
JESSICA THOMAS

# What's Your STYLE POV?

How do you want your home to feel? Cozy and calm? Playful and energetic? At one with nature? Well, you're in luck—there's a decorating style for that. Join us as we explore the hallmarks of four trending yet timeless decor styles. Once you know how your favorite one comes together, find freedom in creating your own style point of view.

If you like pared-back simplicity that embraces nature, boasts *creature comforts*, and promotes well-being at home, you might like

# JAPANDI



● This style has two equal influences: the respect of nature and minimalism found in Japanese design and the cozy comfort of a Scandinavian aesthetic—hence the portmanteau, Japandi, which caught on around 2016. A fusion of natural materials, organic shapes, and earthy colors, it imparts a sense of tranquility. In this light-filled living room, a curved sofa covered in nubby bouclé harmonizes with a low-slung wood chair and a shapely green marble table. Accessories are minimal too—just plants and a patchwork-like art piece that echoes the wood-slat wall beyond it.

SLAT WALL: THE WOOD VENEER HUB USA, LIMEWASH: JH WALL PAINTS



Limewash is natural and eco-friendly, and gives the wall a cloudlike finish.

Subtle patterns create gentle visual movement without detracting from the overall calm.

## Elements of the Style

### COLOR PALETTE

Drawn from nature with an emphasis on simplicity: leafy greens, midtone browns, and warm whites.

### CURVY FURNITURE

Organic shapes with few hard edges, in touchable fabrics like bouclé, wool, and linen.

### NATURAL MATERIALS

Lots of raw or stained wood and caning alongside displays of plants, rocks, and driftwood.

If you like architectural form that follows *practical function*, consider the stripped-down style of  
**BRUTALISM**



● Brutalism, the mid-20th-century architectural and design movement that celebrated (rather than disguised) raw materials and utilitarian functions, has been experiencing a renaissance. Concrete, metal, and blocky wood furniture still define the look, but the combinations feel warmer and the lines and curves lean softer. In this dining room, a chunky ebonized table, aged copper pendant, and slat-frame chairs with curved backs that recall Frank Lloyd Wright's signature aesthetic stand out against a backdrop devoid of ornamentation save for the mottled wall treatment.

PHOTO: (ROOM WITH FIREPLACE) SETH SMOOT, (SITTING AREA) BEN ANDERS FOR SOHO HOME



Introducing geometric patterns (like in a rug or pillow) can help a minimal space feel more livable.



Textured wallcoverings like embossed vinyl offer the look of concrete in an easier-to-install format.

### Elements of the Style

#### EXPOSED MATERIALS

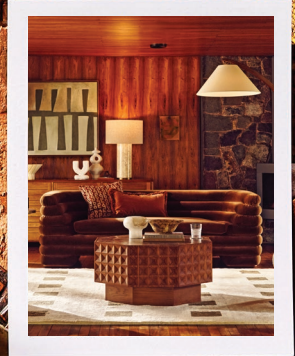
Combinations of clay, concrete, wood, and stone used on walls, floors, furniture, and accessories.

#### EARTHY COLORS

A brown-forward palette made dramatic with texture and warmed up by muted oranges.

#### MIXED METALS

Copper, brass, silver, and gold in both burnished and matte finishes.





If layers of patterns in garden-fresh colors make up your cozy, nostalgic happy place, you might go for

# COTTAGECORE



● Cottagecore is as much a decorating evolution as it is an attempt to escape to a simpler time, with the goal of creating a mood that's romantic, idyllic, and carefree. This look turns a riot of patterns, all in soft floral-inspired pastels, into a storybook landscape that feels like you've been transported to Jane Austen's English countryside. In this bedroom, layers of checks, stripes, block prints, and florals get flirty with tasseled fringe, ruffles, and pleats. Storied antique furniture, turned wood, and woven textures ground the color scheme, keeping it from looking fussy or straying too sweet.

WALLPAPER: SPOONFLOWER INC.



Even the tiniest hit of a dark, saturated color (like red) helps ground a sweet palette.

## Elements of the Style

**PATTERN MIX**  
A blend of classic cottage designs—florals, ginghams, and block prints—with plenty of variation in scale.

**SOFT SHADES**  
Fresh hues—like pink, blue, purple, green—but soft, muted, even a bit dusty.

**SENSE OF AGE**  
Antique, vintage, and heirloom furniture, both stained and painted. Materials with patina, such as aged brass. □

↑  
Use handmade traditional crafts, such as pottery, needlepoint, and quilts, as accents.